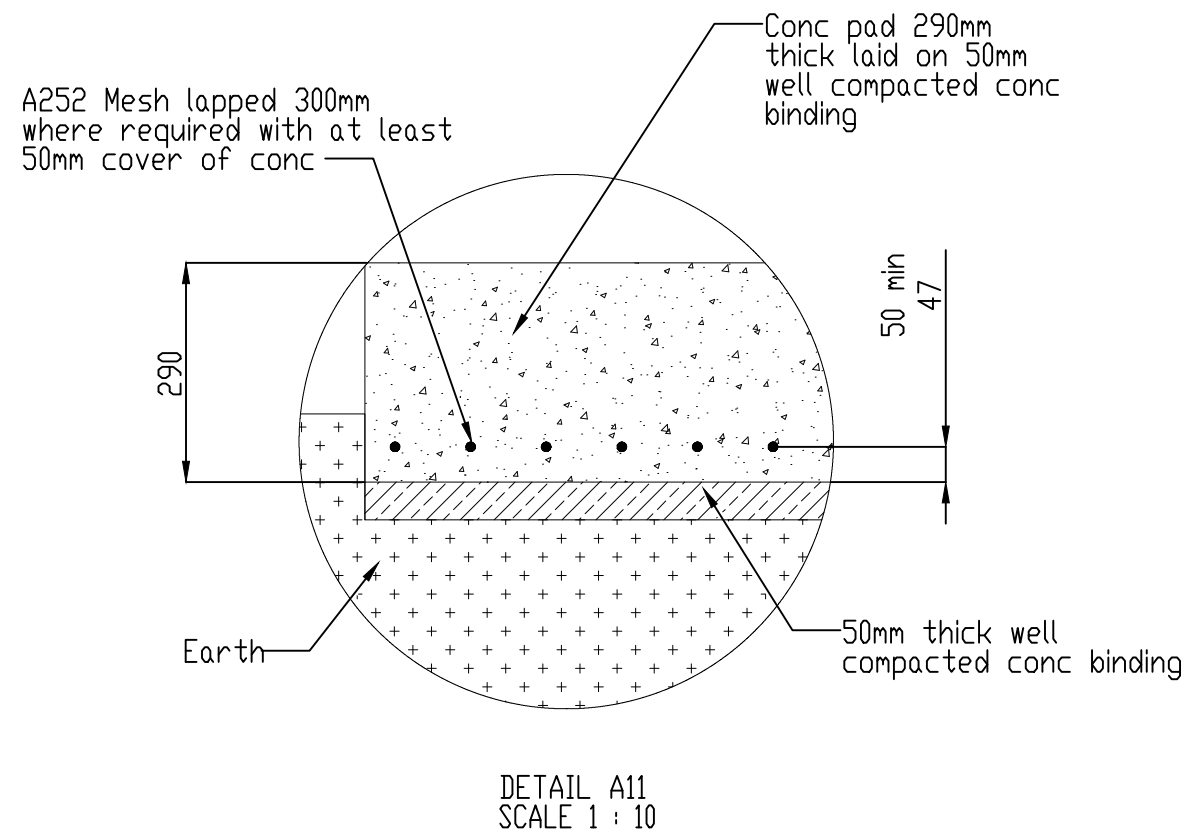
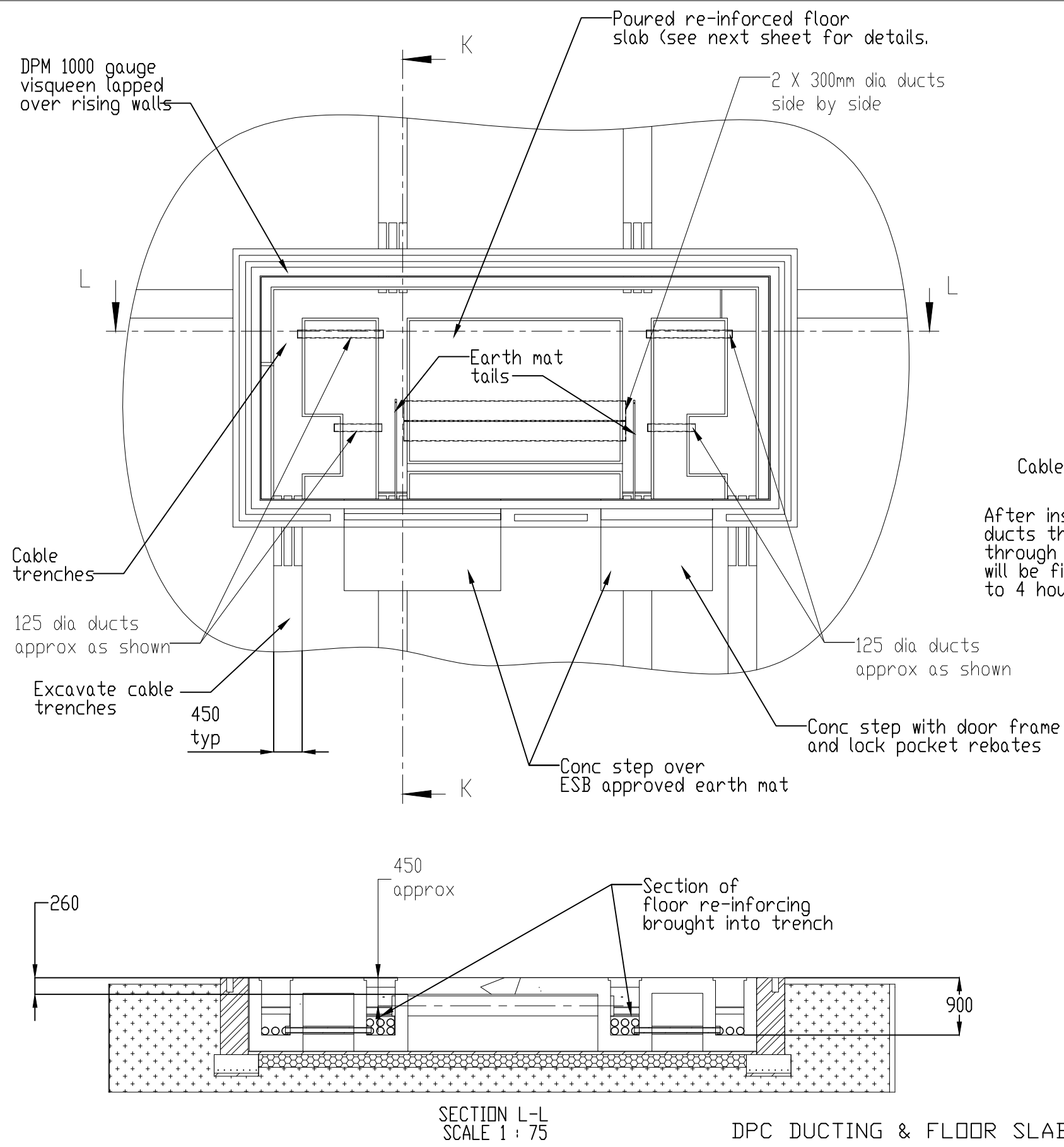


- NOTES:
- GENERAL.
The following notes refer to the requirements for the re-inforced concrete strip foundation.
 - DETAILS.
The concrete strip will be a minimum of 700mm wide and 290mm thick, re-inforced with A252 square mesh lapped 300mm at all joints with at least 50mm of concrete covering. The strip will be laid on 50mm thick well compacted concrete binding laid in base of trench minimum depth of 1400mm below ground.



Refer to general notes (sheets 1 & 2) for details of steelwork and wall construction requirements.

STRIP FOUNDATION DETAILS



DPC DUCTING & FLOOR SLAB

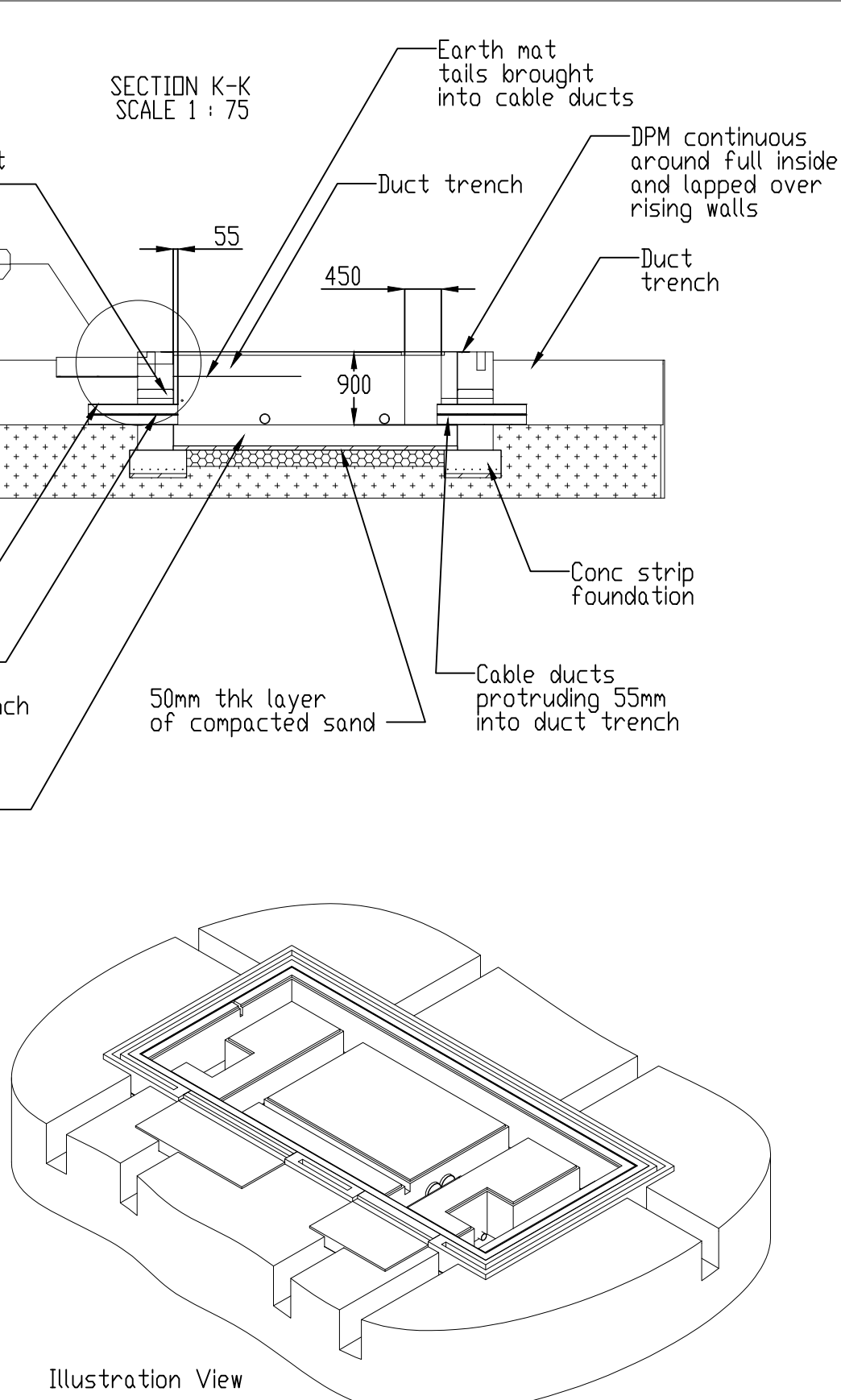
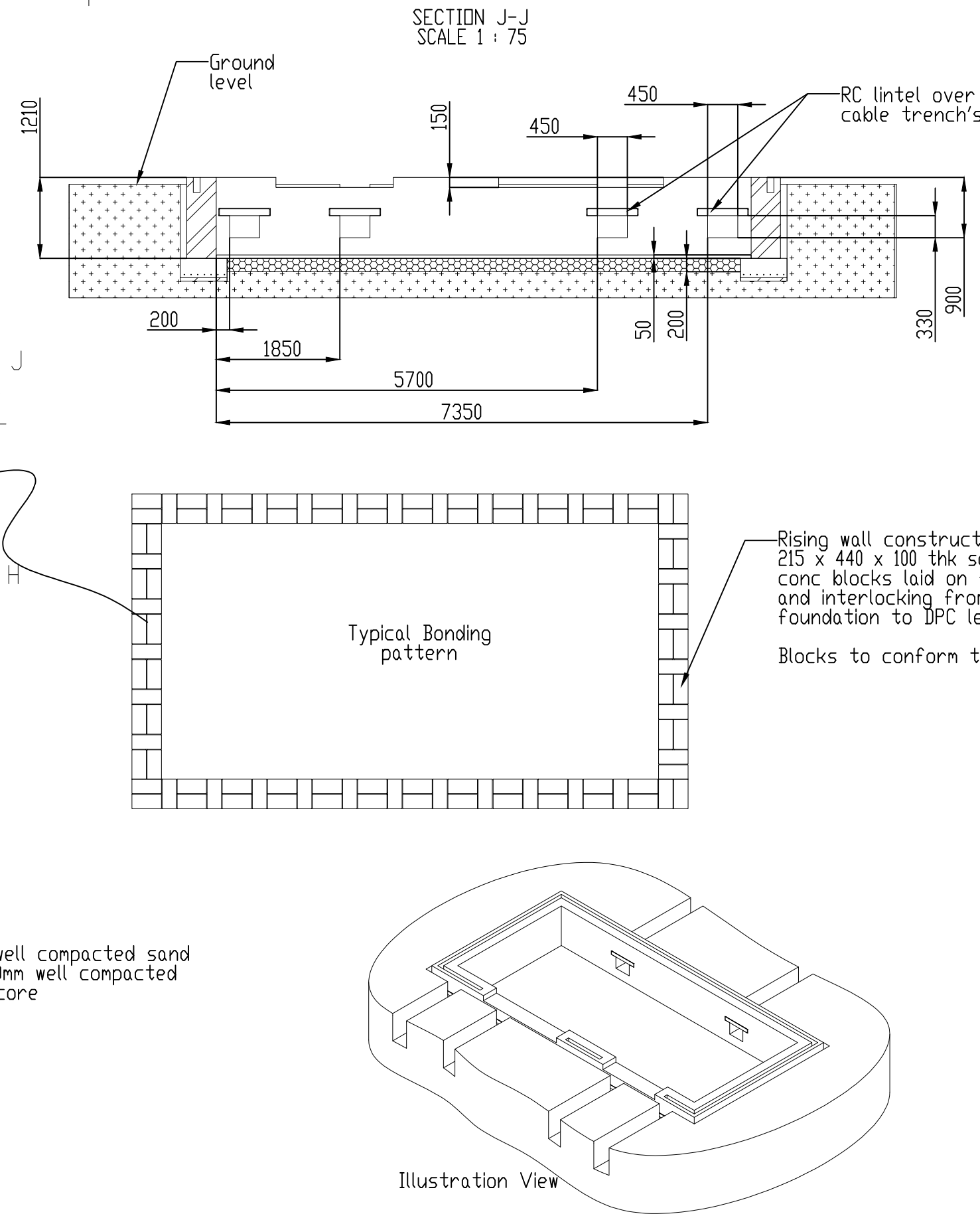
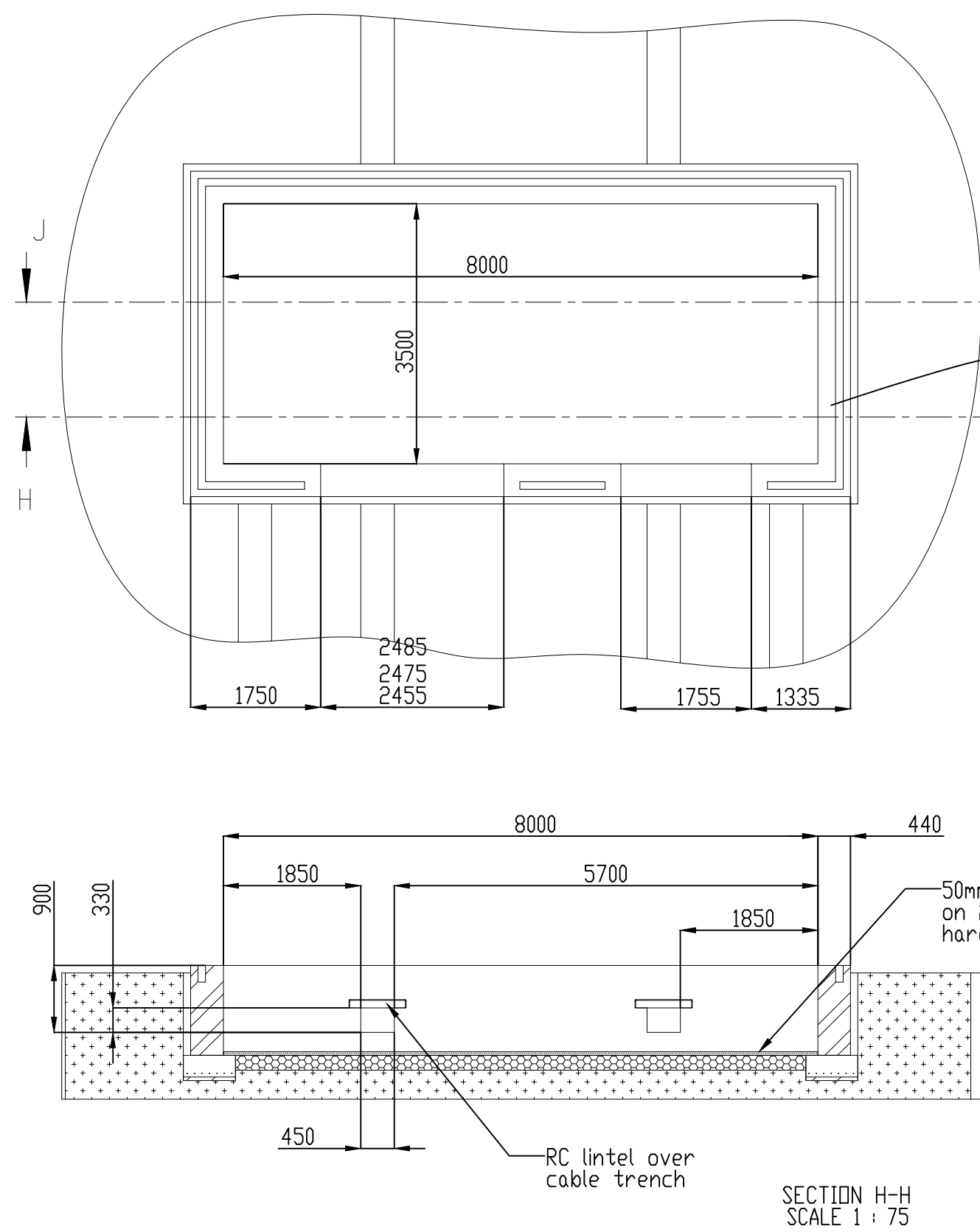


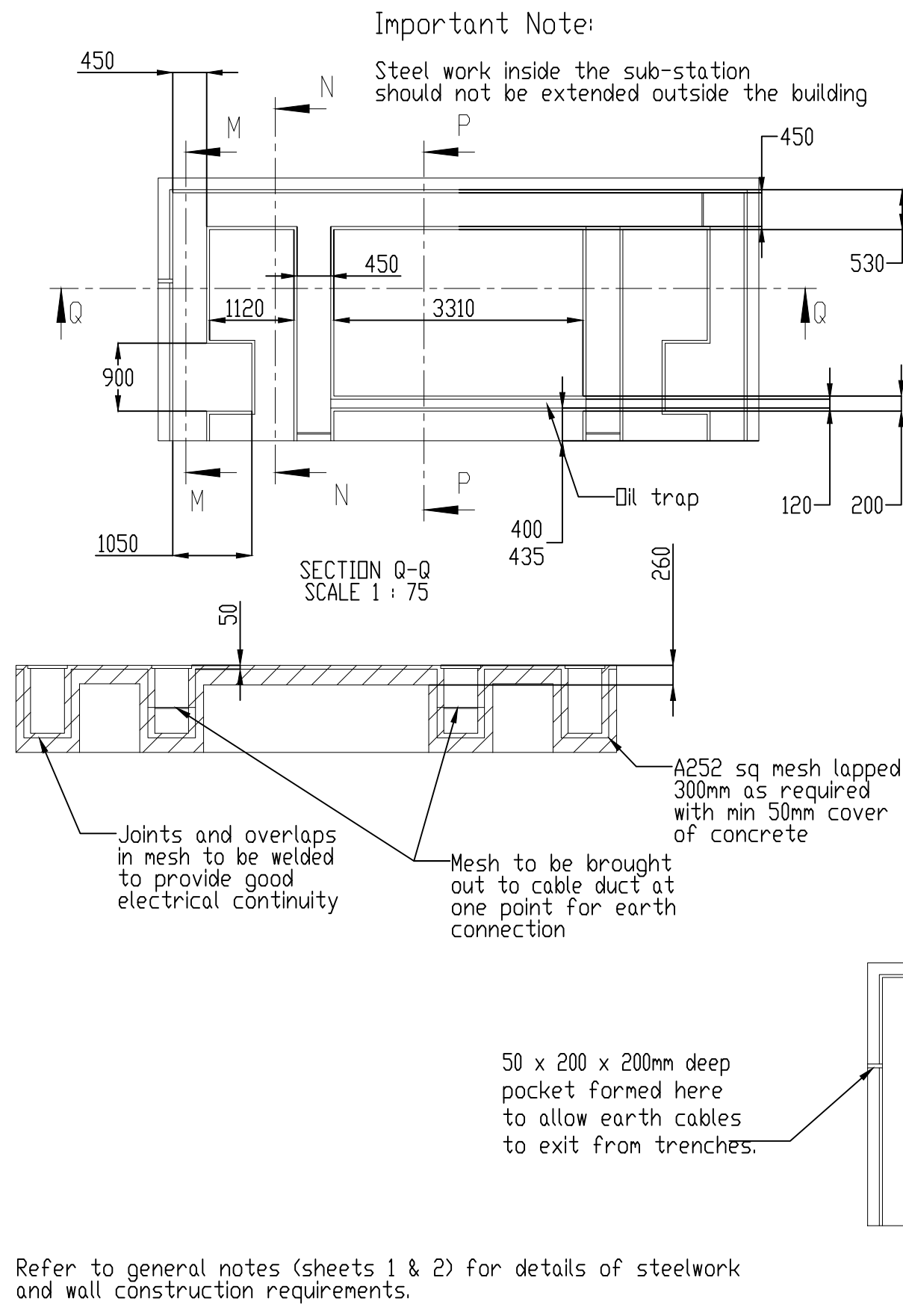
Illustration View

Refer to general notes (sheets 1 & 2) for details of steelwork and wall construction requirements.

Refer to general notes (sheets 1 & 2) for details of steelwork and wall construction requirements.



RISING WALLS & DUCT OPES



Refer to general notes (sheets 1 & 2) for details of steelwork and wall construction requirements.

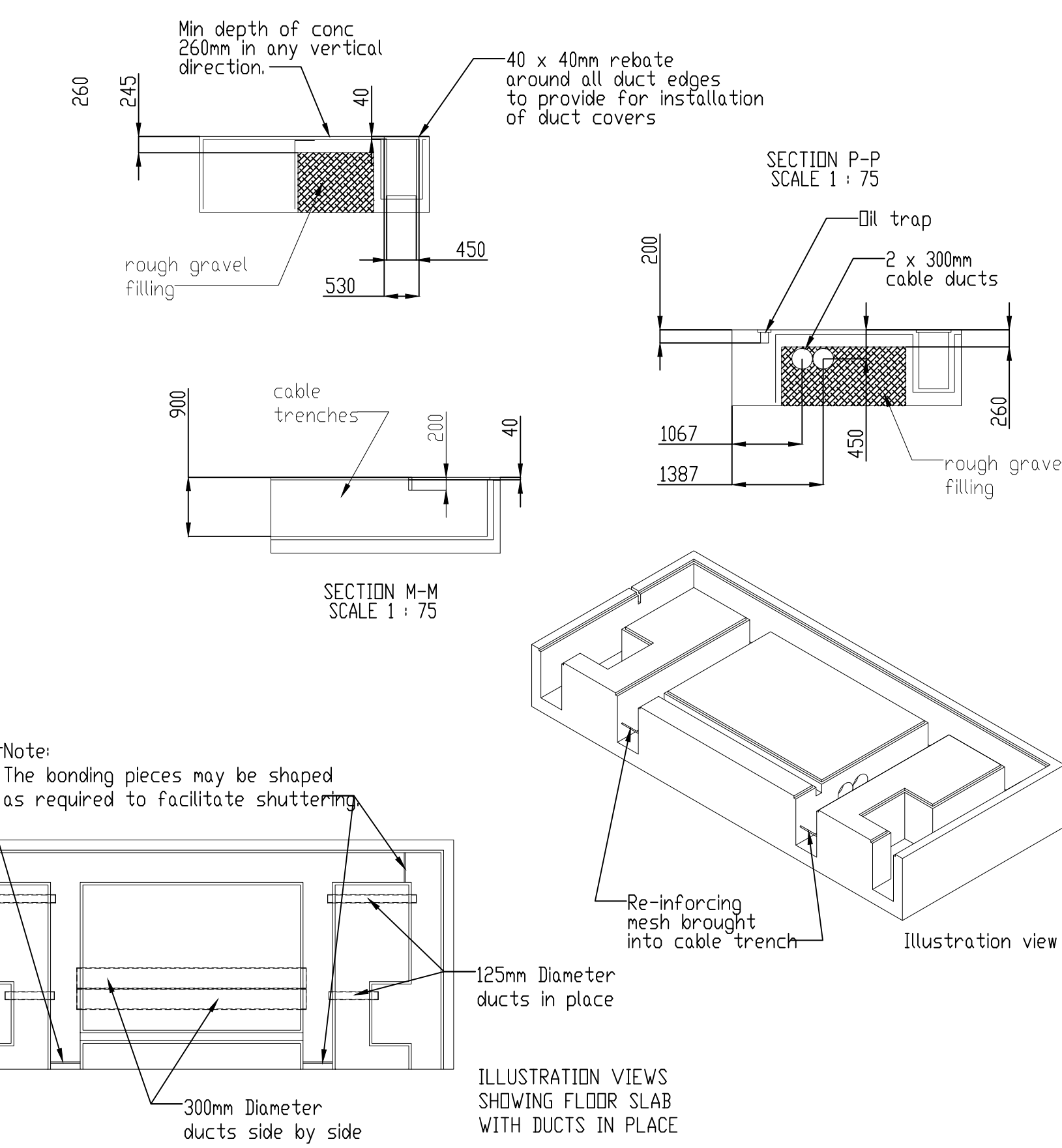


ILLUSTRATION VIEWS SHOWING FLOOR SLAB WITH DUCTS IN PLACE

General Notes
A. DO NOT SCALE FROM THIS DRAWING- WORK ONLY FROM FIGURED DIMENSIONS.
B. ALL ERRORS & OMISSIONS TO BE REPORTED TO THE CONSULTING ENGINEER
C. THIS DRAWING IS TO BE READ IN CONJUNCTION WITH ARCHITECTS' AND STRUCTURAL ENGINEER'S DRAWINGS.
D. REFER TO DOCUMENT REGISTER FOR DESCRIPTION OF STATUS CODES.

© Copyright Varming Consulting Engineers Ltd

P01	S4	25/06/21	ISSUE FOR INFORMATION	C.M.C	
Rev	Status	Date	Description	D.E.	

Client
RHONELLEN DEVELOPMENT
Project Title
TEMPLAR PLACE SHD

Drawing Title
ESB DETAILS SHEET 3 OF 4



Dublin
Cork
Roscommon
Website
www.varming.ie

Varming
Consulting Engineers Ltd.

Revision	P01	Project Drawing Reference	20723-VCE-ZZ-XX-DR-E-002
Status	S4	Varming Project Number	20723
Date	NOV 2020	Checked By	P.H.
		Drawn By	A.W.
		Scale	N.T.S.

Titleblock Revision: 2020_2